

Drehmoment-Schraubendreher

A variably settable torque which covers a large range of usage.

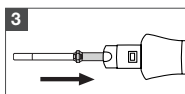
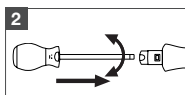
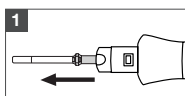
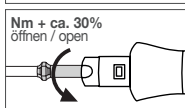
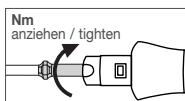
Torque Screwdriver

Variabel einstellbares Drehmoment deckt großen Anwendungsbereich ab.

Tournevis dynamométrique

Le couple de serrage à réglage variable couvre un grand domaine d'application.

EN ISO 6789-1
ASME B107.14M

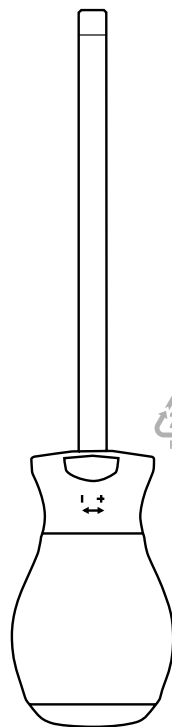
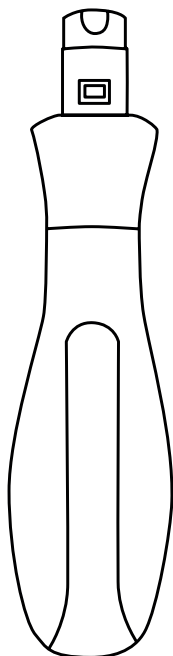


ATTENTION!



Empfehlung zur Kalibrierung gemäß Norm EN ISO 6789 nach 5.000 Auslösungen oder 1 Jahr nach Nutzungsbeginn.

According to Standard EN ISO 6789 it is required the tool is calibrated after 5.000 clicks or 1 year from start of use.



00090002445